

Biopsy Site Marking Solutions

Options for every modality.



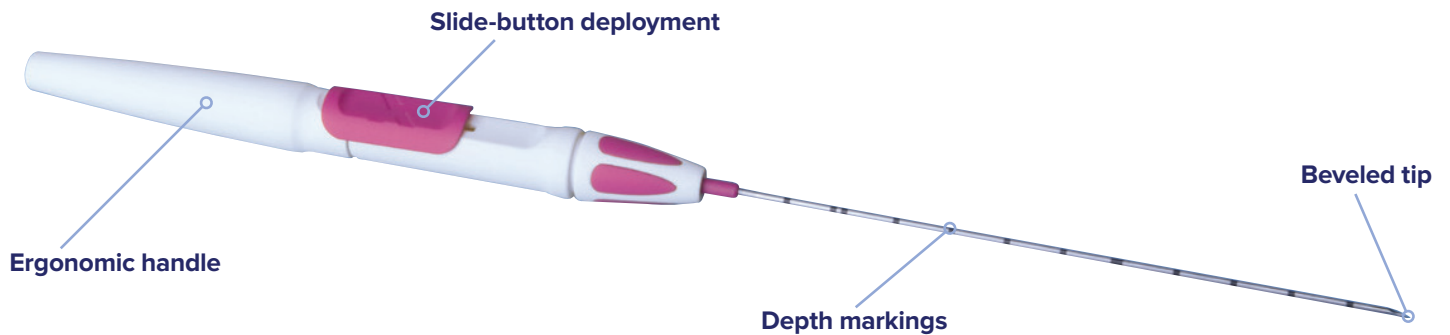
Hologic is dedicated to advances in medical technologies that contribute to **long, healthy lives for women**. We bring imaging and intervention together, delivering a continuum of care options for screening, diagnosis and treatment. In the field of breast biopsy, we will continue to work with physicians to discover and deliver more **compassionate and effective solutions for women**.



Tumark[®] Professional X, Q and Vision Biopsy

The Tumark biopsy site markers provide tissue fixation and visibility in ultrasound, x-ray and MRI.

The 18G deployment device allows for marking the biopsy site, suspicious lesions and lymph nodes in the axilla.



Available Shapes



X



Q



Vision



Visibility

Tumark Professional X & Q markers are constructed of sand-blasted nitinol, designed to provide visibility in ultrasound

Visible upon deployment under Ultrasound, Mammography and MRI



Intelligent design

Intelligent design provides tissue fixation

Non-resorbing material expands into marker shape upon deployment

Three distinct shapes for ease of identifying between biopsy sites



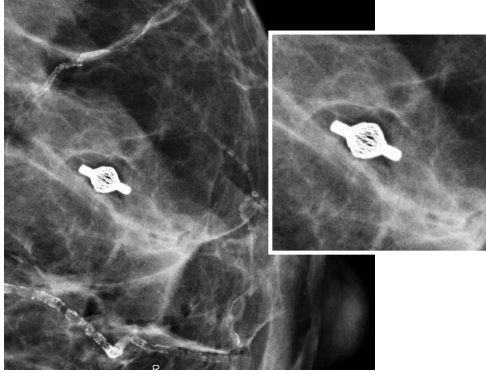
Single-handed operation

Ergonomic handle for single-handed operation allows for simultaneous operation of the ultrasound transducer with the second hand

Site Markers — Distributed by Hologic

Clinical Images*

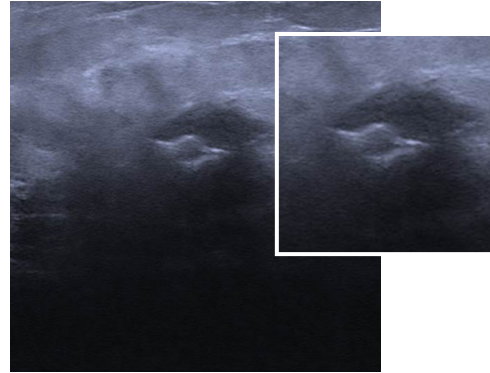
Tumark Marker Under Mammography



Tumark Vision marker

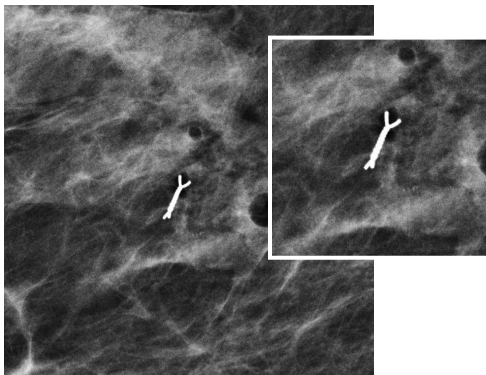
Image courtesy of Dr. Stoeblen, Essen, Germany

Tumark Marker Under Ultrasound



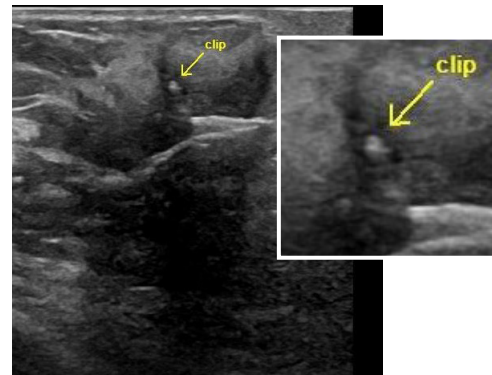
Tumark Vision marker

Image courtesy of Dr. Stoeblen, Essen, Germany



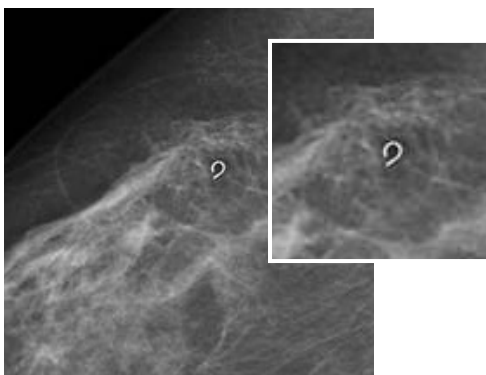
Tumark X marker

Image courtesy of Dr. Lashonda Soma, Grand Forks, ND, USA



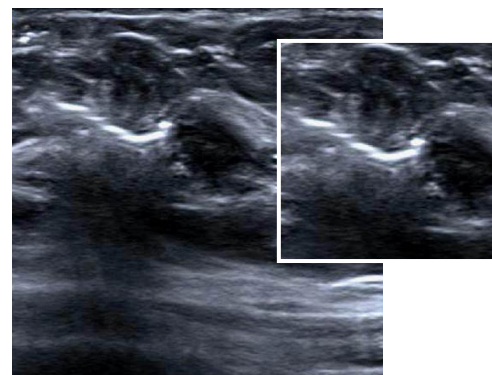
Tumark X marker

Image courtesy of Dr. Lashonda Soma, Grand Forks, ND, USA



Tumark Q marker

Image courtesy of Somatex Medical Technologies



Tumark Q marker

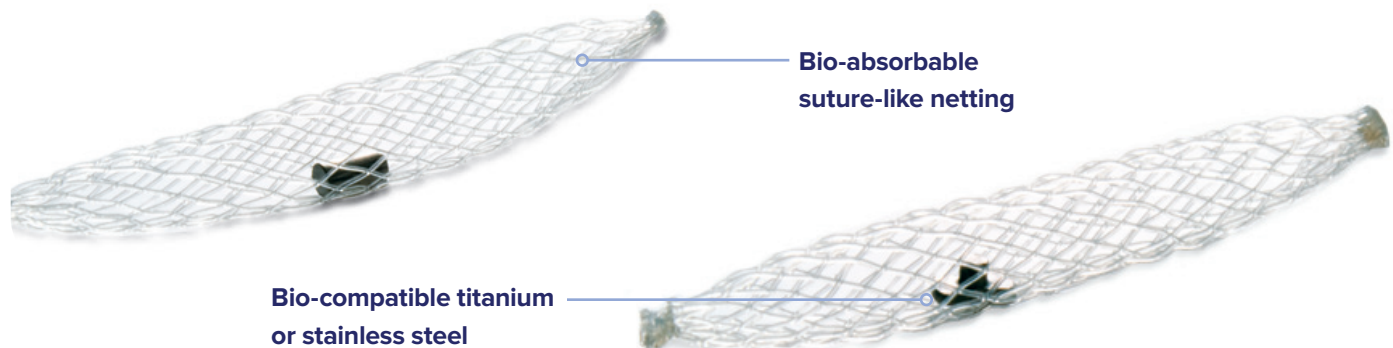
Image courtesy of Somatex Medical Technologies

*Images under magnification not actual size. Please note IFU for exact specifications.

SecurMark[®] biopsy site markers — Enhanced

The SecurMark[®] family of biopsy site markers provides exceptional site marking solutions.

SecurMark site markers are comprised of two components: the permanent marker is made of bio-compatible titanium or stainless steel, while the outer material consists of bio-absorbable suture-like netting that is designed to minimize movement within the biopsy cavity and enhance ultrasound visualization. SecurMark site markers are available in five distinct shapes to allow for multi-site identification.



SecurMark Biopsy Site Markers

SecurMark for ATEC[®]

- Features side deployment delivery system with a flexible cannula.
- For use with ATEC handpieces in stereotactic or ultrasound procedures.

SecurMark for Celero[®] and SecurMark Ultrasound

- Features end deployment using a rigid deployment device with an easy transition hub and a beveled tip for seamless access to the biopsy site.
- Can be used with or without an introducer.
- For use with the Celero breast biopsy device and the Sertera biopsy device.

SecurMark for Eviva[®]

- Utilizes a rigid end-deploy delivery system that requires no pull-back for deployment.
- Part of the Eviva integrated stereotactic solution to ensure easy and accurate delivery.

SecurMark for MRI

- Utilizes a rigid-end-deploy device for an integrated MRI solution.
- Permanent component options allow for a wide array of artifact.

ultrasound visibility with multiple shapes

SecurMark Titanium Options

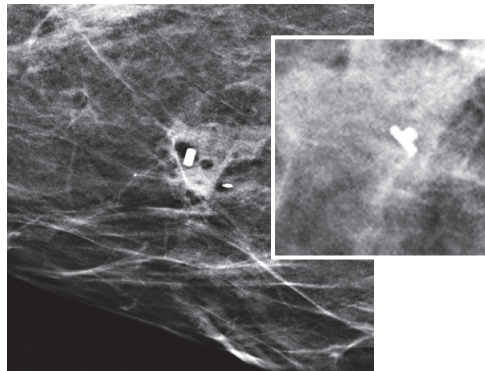
The SecurMark titanium options feature permanent markers made of bio-compatible titanium with the outer layer comprised of bio-absorbable suture-like netting. The titanium markers are available in two distinct shapes for multi-site marking.



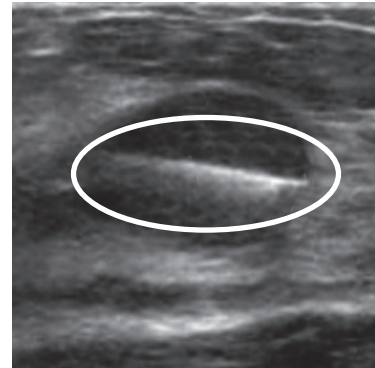
Top Hat



Mini Cork



SecurMark Mammography

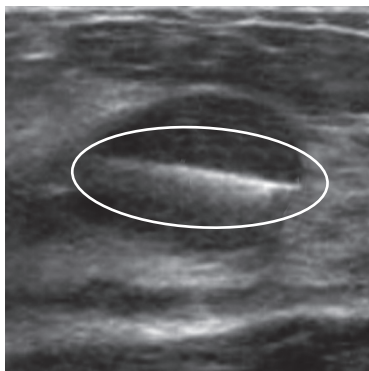
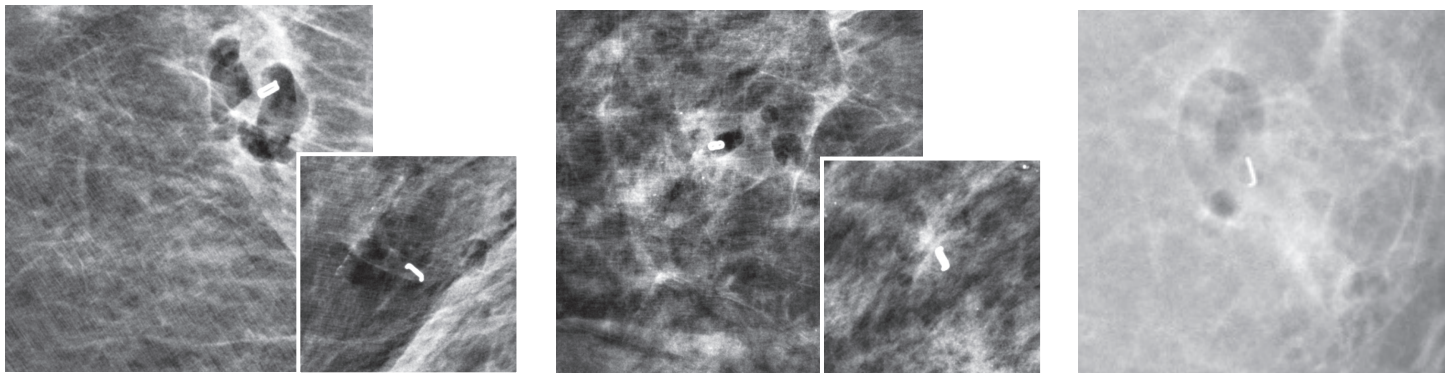


SecurMark for Celero in Ultrasound

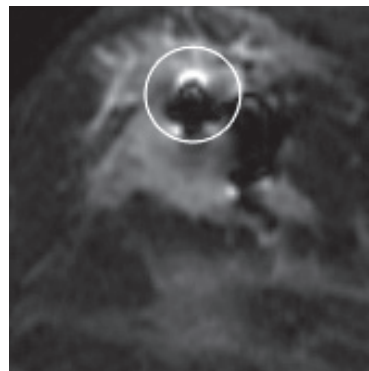
SecurMark Stainless Steel Options

To provide a wide array of biopsy site marking options, the SecurMark family also includes stainless steel markers in three new shapes. Like the titanium versions, the stainless steel markers feature the bio-absorbable suture-like netting outer layer and are available for deployment compatible with all Hologic biopsy devices. The permanent stainless steel component provides increased visualization under MRI-guidance.

SecurMark under Mammography



SecurMark under Ultrasound



SecurMark under MRI

Available Shapes



Buckle



Infinity



Stoplight

TriMark[®] and CeleroMark[™]

Biopsy Site Markers

The TriMark marker is our original biopsy site marking solution for use with the ATEC and Eviva breast biopsy systems. Its rigid marker deployment system provides easy and accurate access to the biopsy site. The TriMark biopsy site marker can be used with all ATEC and Eviva needle options, including MRI.

The CeleroMark biopsy site marker is designed for use with the Celero and Sertera biopsy devices. The CeleroMark biopsy site marker features an end deploy beveled tip for smooth marker deployment under ultrasound-guided breast biopsy procedures.

Both the TriMark and CeleroMark site markers are comprised of bio-compatible titanium and are available in two shapes, the cork and the hourglass.



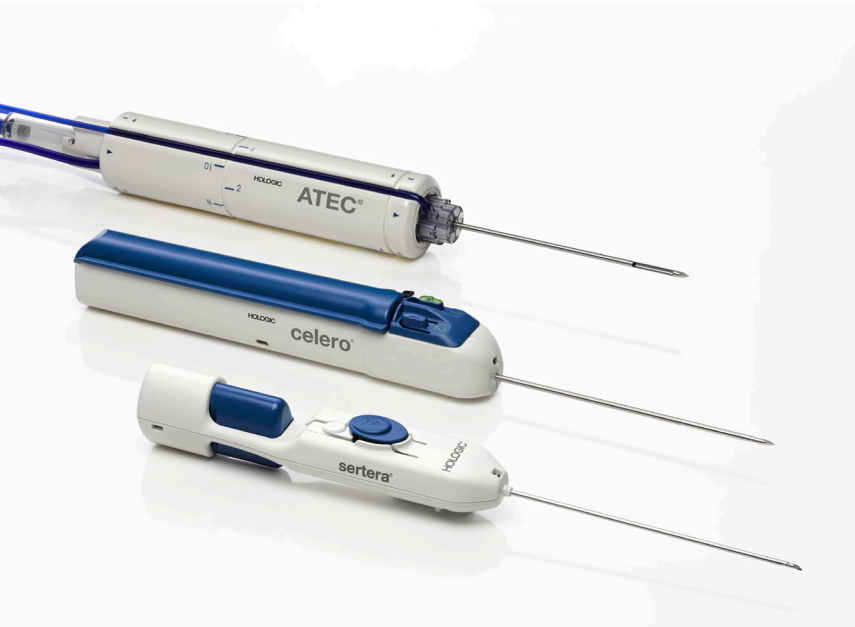
Cork



Hourglass

Advanced Breast Health Solutions in all imaging modalities

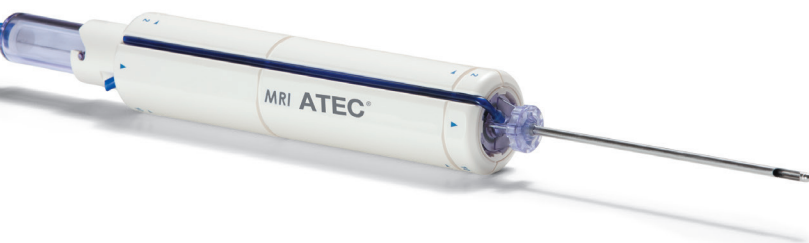
Hologic offers an extensive line of comprehensive breast biopsy solutions designed to provide compassionate intervention and treatment.



Ultrasound



Stereotactic



MRI

Innovation starts with the willingness to listen and the ability to understand. By leveraging the knowledge and insight of leading physicians, technologists and administrators, Hologic provides more choices for ultrasound-guided breast biopsy, from partial to complete removal of benign lesions, to sampling of breast tissue for diagnostic review.

Our goal is to support compassionate intervention for all patients.

www.hologic.com | info@hologic.com | +1.800.442.9892

**Hologic Headquarters
United States / Latin America**
250 Campus Drive
Marlborough, MA 01752
USA Tel: +1.508.263.2900
Sales: +1.781.999.7453
Fax: +1.781.280.0668
Email: info@hologic.com

Hologic Europe
Everest (Cross Point)
Leuvensesteenweg
250A 1800
Vilvoorde, Belgium
Tel: +32.2.711.4680
Fax: +32.2.725.2087

Hologic Asia Pacific
7th Floor, Biotech Centre 2
No. 11 Science Park West Avenue
Hong Kong Science Park
Shatin, New Territories, Hong Kong
Tel: +852.3748.7700
Fax: +852.3526.0723

Hologic Australia
Suite 402, Level 4
2 Lyon Park Road
Macquarie Park NSW 2113
Australia
Tel: +61.2.9888.8000
Fax: +61.2.9870.7555

SS-00087 Rev.003 (1/17) Hologic Inc. ©2016 All rights reserved. Hologic, ATEC, Celero, CeleroMark, Eviva, SecurMark, Sertera, TriMark, The Science of Sure, and associated logos are trademarks and/or registered trademarks of Hologic, Inc., and/or its subsidiaries in the United States and/or other countries. Tumark and associated logos are trademarks and/or registered trademarks of Somatex Medical Technologies GmbH. Hologic is an authorized distributor of Tumark Professional X, Q and Vision biopsy site markers. This information is intended for medical professionals in the U.S. and other markets and is not intended as a product solicitation or promotion where such activities are prohibited. Because Hologic materials are distributed through websites, eBroadcasts and tradeshow, it is not always possible to control where such materials appear. For specific information on what products are available for sale in a particular country, please contact your local Hologic representative.