

# Comprehensive Solutions in Ultrasound-guided breast biopsy

Outstanding Interventional Options



FAST  
SAFE  
SIMPLE



**Hologic's breast biopsy solutions continue to lead the way** in offering physicians a **compassionate and effective** alternative to open surgical biopsy. We are consistently delivering the advances that physicians are looking for in breast biopsy procedures: precision and control, fast acquisition of multiple tissue samples. and more.

## The Hologic suite of ultrasound-guided breast biopsy systems.

### Patient inspired, physician focused

The ATEC vacuum-assisted breast biopsy system has been designed for radiologists and surgeons who consider compassionate patient care and results as essential elements in minimally invasive breast biopsy.

**The ATEC system is FDA cleared for partial and complete removal of the imaged abnormality.**



#### Fast

- Tissue acquisition occurs every 4.5 seconds, typically lasting less than 30 seconds total.
- Easily delivers local anesthetic without interruption.
- Combination of saline lavage and constant aspiration helps ensure a core with every cycle.



#### Safe

- Fully closed ATEC system reduces contamination risk.
- Fully disposable handpiece and tubing minimizes staff exposure to biohazard.



#### Simple

- No software to program console.
- Simple one minute set-up and clean-up.
- Multiple needle options for diagnostic tissue sampling & benign breast tissue removal to address a wide spectrum of patients.
- Seamless marker deployment when using an ATEC ultrasound introducer.

“ I LOVE the Celero needles. They are absolutely amazing. I feel that these needles will change, for the better, the way we do breast biopsies.”

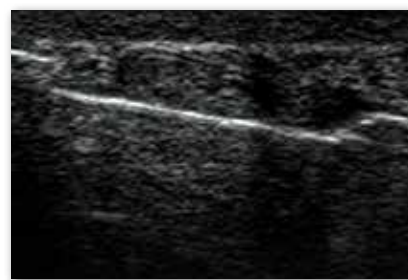
- Serena L. Viturawong  
Breast Care Center, Mercy Medical  
Chicago, IL



Celero device core, more than 2x the tissue vs. 14g spring loaded-core<sup>1</sup>



Celero breast biopsy device



Aperture open and ready for tissue acquisition

<sup>1</sup>Englander, B. White Paper. 2013, Hologic WP-00006

## Compassion Patients Deserve, **Quality Physicians Demand**

The Celero breast biopsy device is **the first vacuum-assisted, spring-loaded core device designed for use under ultrasound.**

With the Celero device you can achieve your goals with fewer samples and large quality cores, which means fewer needle insertions and a more compassionate breast biopsy for your patient versus traditional spring-loaded core devices.

### Celero breast biopsy device: more control, consistent cores, better access



#### **Better Cores**

- Core size more than **2x the size**<sup>1</sup> of other 14g core needle devices
- Fewer insertions needed for accurate diagnosis
- Consistent core quality



#### **Better Access with pre-fire option**

- 11° trocar tip provides **smooth penetration** to lesion while eliminating deflection
- No throw insertion enables better control for challenging procedures: chest wall, axilla and implants



#### **Better Confirmation**

- Two firing modes provide flexibility for precise control and verification of sample area
- Vacuum technology holds tissue in the aperture ensuring large core sample
- **Aperture clearly visible** prior to tissue acquisition

# sertera®

Biopsy Device



The Sertera® biopsy device is **the newest member of the Hologic ultrasound-guided breast biopsy family**. The disposable core needle biopsy device is available in multiple gauge sizes. It is lightweight and designed to be completely armed and fired with one hand, making **the Sertera biopsy device the perfect choice for core needle biopsies**.

**In fact, 9 out of 10 said— easy to use**

In an initial survey, **95%** of physicians stated that the Sertera biopsy device was **easy to arm & fire and allowed for one-handed operation.**<sup>2</sup>



## Differentiated core needle biopsy device



### Outstanding Control

- HandForm™ design enables one-handed operation
- Ergonomic and lightweight, the device fits comfortably in a variety of hand sizes
- Two firing modes provide precise control, allowing you to confidently verify sampling area



### Quality Cores

- Unique needle design supports acquisition of large representative tissue samples in as few needle passes as possible



### Easy Access

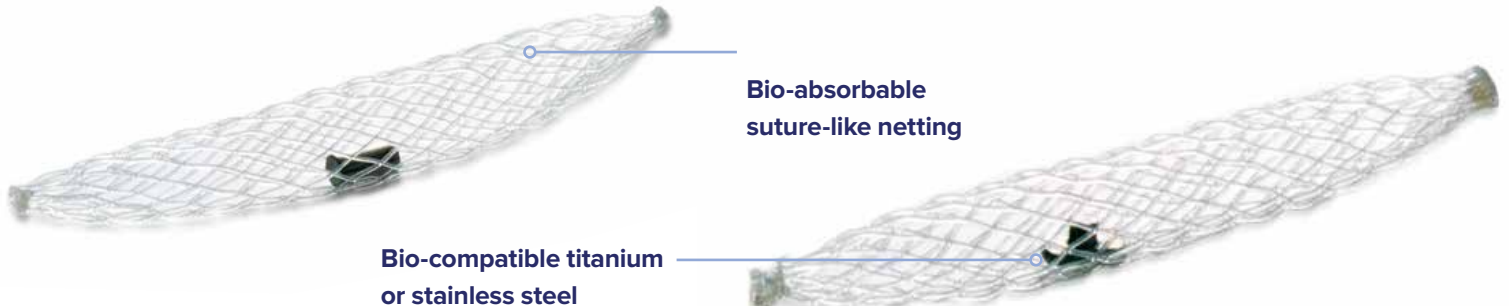
- Pre-fire option provides an easy approach to difficult-to-access lesions
- Fire & acquire capability facilitates penetration of mobile or dense lesions

<sup>2</sup> Data collected from 100 cases performed at various sites using the Sertera Biopsy Device, 2015.

## SecurMark® biopsy site markers

Enhanced ultrasound visibility with multiple shapes.

The **SecurMark® family of biopsy site markers provides exceptional site marking solutions.** SecurMark site markers are comprised of two components: the permanent marker is made of bio-compatible titanium or stainless steel, while the outer material consists of bio-absorbable suture-like netting that is designed to minimize movement within the biopsy cavity and enhance ultrasound visualization. **SecurMark site markers are available in five distinct shapes to allow for multi-site identification.**



### SecurMark for ATEC®

- Features side deployment delivery system with a flexible cannula.
- For use with ATEC handpieces in stereotactic or ultrasound procedures.

### SecurMark for Celero® and SecurMark Ultrasound

- Features end deployment using a rigid deployment device with an easy transition hub and a beveled tip for seamless access to the biopsy site.
- Can be used with or without an introducer.
- For use with the Celero breast biopsy device and the Sertera biopsy device.

#### Available Shapes



Buckle



Infinity



Stoplight



Mini Cork



Top Hat

**Innovation** starts with the willingness to listen and the ability to understand. By leveraging the knowledge and insight of leading physicians, technologists and administrators, Hologic provides more choices for ultrasound-guided breast biopsy, from partial to complete removal of benign lesions, to sampling of breast tissue for diagnostic review.

**Our goal is to support compassionate intervention for all patients.**

[www.hologic.com](http://www.hologic.com) | [info@hologic.com](mailto:info@hologic.com) | +1.800.442.9892

**Hologic Headquarters  
United States / Latin America**  
250 Campus Drive  
Marlborough, MA 01752  
USA Tel: +1.508.263.2900  
Sales: +1.781.999.7453  
Fax: +1.781.280.0668  
Email: [info@hologic.com](mailto:info@hologic.com)

**Hologic Europe**  
Everest (Cross Point)  
Leuvensesteenweg  
250A 1800  
Vilvoorde, Belgium  
Tel: +32.2.711.4680  
Fax: +32.2.725.2087

**Hologic Asia Pacific**  
7th Floor, Biotech Centre 2  
No. 11 Science Park West Avenue  
Hong Kong Science Park  
Shatin, New Territories, Hong Kong  
Tel: +852.3748.7700  
Fax: +852.3526.0723

**Hologic Australia**  
Suite 402, Level 4  
2 Lyon Park Road  
Macquarie Park NSW 2113  
Australia  
Tel: +61.2.9888.8000  
Fax: +61.2.9870.7555

PB-00102 Rev.004 (6/16) Hologic Inc. ©2016 All rights reserved. Hologic, ATEC, Celero, HandForm, SecurMark, Sertera, The Science of Sure, and associated logos are trademarks and/or registered trademarks of Hologic, Inc., and/or its subsidiaries in the United States and/or other countries. This information is intended for medical professionals in the U.S. and other markets and is not intended as a product solicitation or promotion where such activities are prohibited. Because Hologic materials are distributed through websites, eBroadcasts and tradeshows, it is not always possible to control where such materials appear. For specific information on what products are available for sale in a particular country, please contact your local Hologic representative.