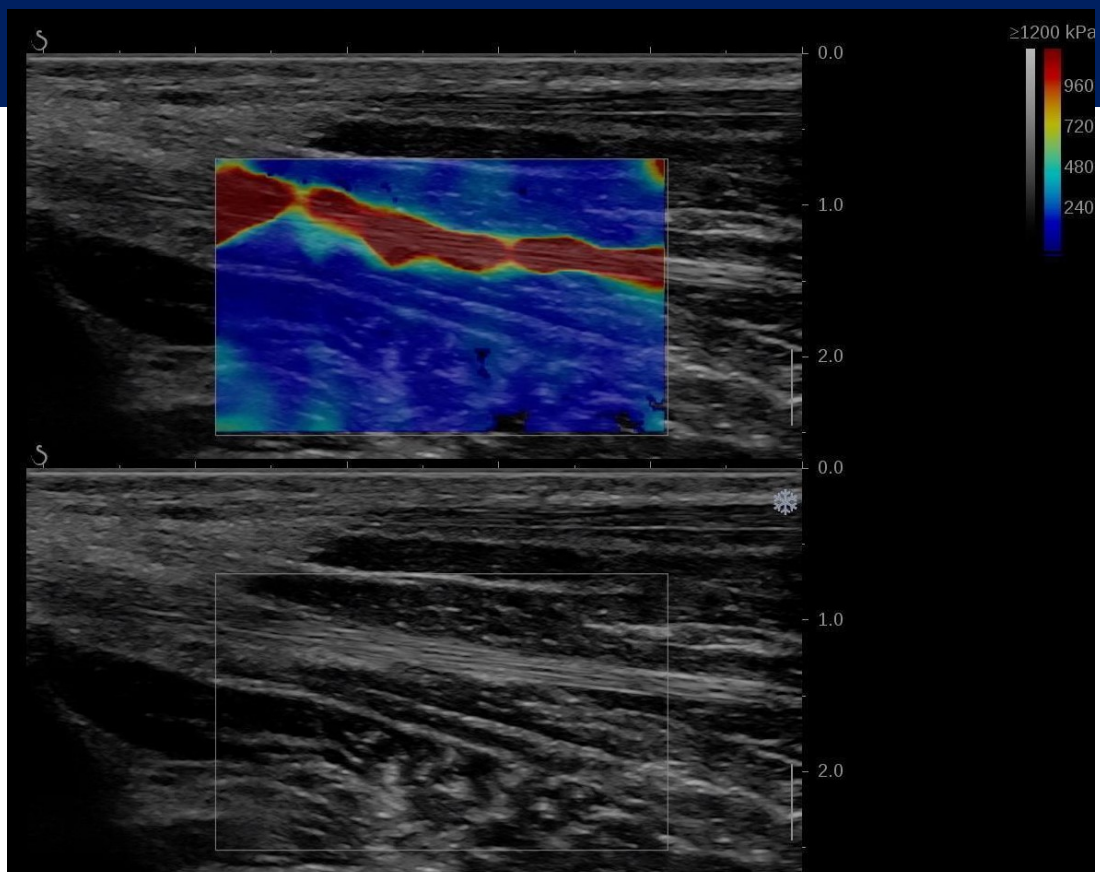


HOLOGIC[®]

PEER-REVIEWED ARTICLES

SHEARWAVE[™] ELASTOGRAPHY FOR MUSCULO-SKELETAL SYSTEMS



1. Flattres A, Aarab Y, Nougaret S, et al. Real-time shear wave ultrasound elastography: A new tool for the evaluation of diaphragm and limb muscle stiffness in critically ill patients. *Crit Care*. 2020;24:34. doi: 10.1186/s13054-020-2802-1.
2. Chodock E, Hahn J, Setlock CA, et al. Identifying predictors of upper extremity muscle elasticity with healthy aging. *J Biomech*. 2020;103:109687. doi: 10.1016/j.jbiomech.2020.109687.
3. Yoo S, Lee S, Song Y, et al. Elasticity value of torn supraspinatus tendons measured by shear wave elastography: a potential surrogate marker of chronicity? *Ultrasonography*. 2020;39:144-151. doi: 10.14366/usg.19035.
4. Sun Y, Xiao Y, Li F, et al. Diagnosing muscle atrophy by use of a comprehensive method of assessing the elastic properties of muscle during passive stretching. *Am J Roentgenol*. 2019;214:862-870. doi: 10.2214/AJR.19.21174.
5. Hollville E, Nordez A, Guilhem G, Lecompte J, Rabita G. Surface properties affect the interplay between fascicles and tendinous tissues during landing. *Eur J Appl Phys*. 2019;120:203-217. doi: 10.1007/s00421-019-04265-9.
6. Zhang C, Duan L, Liu Q, et al. Application of shear wave elastography and B-mode ultrasound in patellar tendinopathy after extracorporeal shockwave therapy. *J Med Ultrasonics*. 2019; 10.1007/s10396-019-00979-7. doi: 10.1007/s10396-019-00979-7.
7. Ternifi R, Pouletaut P, Dakpé S, et al. First evaluation of zygomaticus major muscle elastic properties using a US elastography technique. *J Biomed Sci Eng*. 2019;12(11):459-468. doi: 10.4236/jbise.2019.1211037.
8. Park JY, Kim JK, Cheon JE, et al. Meniscus stiffness measured with shear wave elastography is correlated with meniscus degeneration. *Ultrasound Med Biol*. 2019;46(2):297-304. doi: 10.1016/j.ultrasmedbio.2019.10.014.
9. Zhu Y, Jin Z, Luo Y, et al. Evaluation of the crushed sciatic nerve and denervated muscle with multimodality ultrasound techniques: An animal study. *Ultrasound Med Biol*. 2019;46(2):377-392. doi: 10.1016/j.ultrasmedbio.2019.10.004.
10. Koppenhaver S, Gaffney E, Oates A, et al. Lumbar muscle stiffness is different in individuals with low back pain than asymptomatic controls and is associated with pain and disability, but not common physical examination findings. *Musculoskelet Sci and Pract*. 2020;45:102078. doi: 10.1016/j.msksp.2019.102078.
11. Vergari C, Chanteux L, Pietton R, et al. Shear wave elastography of lumbar annulus fibrosus in adolescent idiopathic scoliosis before and after surgical intervention. *Eur Radiol*. 2019;30:1980-1985. doi: 10.1007/s00330-019-06563-4.
12. Wang Q, Zhang H, Zhang J, et al. The relationship of the shear wave elastography findings of patients with unilateral lumbar disc herniation and clinical characteristics. *BMC Musculoskelet Dis*. 2019. doi: 10.1186/s12891-019-2814-7.
13. Quack V, Betsch M, Hellmann J, et al. Evaluation of postoperative changes in patellar and quadriceps tendons after total knee arthroplasty: A comprehensive analysis by shear wave elastography, power doppler and B-mode ultrasound. *Acad Radiol*. 2020;27:e148-e157. doi: 10.1016/j.acra.2019.08.015.
14. Itoigawa Y, Wada T, Kawasaki T, et al. Supraspinatus muscle and tendon stiffness changes after arthroscopic rotator cuff repair: A shear wave elastography assessment. *J Orthop Res*. 2019;38:219-227. doi: 10.1002/jor.24469.
15. Ding Y, Liu B, Qiao H, et al. Can knee flexion contracture affect cervical alignment and neck tension? A prospective self-controlled pilot study. *Spine J*. 2020;20:251-260. doi: 10.1016/j.spinee.2019.09.008.
16. Coombes BK, Tucker K, Hug F, et al. Relationships between cardiovascular disease risk factors and Achilles tendon structural and mechanical properties in people with type 2 diabetes. *Muscles Ligaments Tendons J*. 2019;9(3):395-404. doi: 10.32098/mltj.03.2019.14.
17. Linek P, Wolny T, Sikora D, et al. Supersonic shear imaging for quantification of lateral abdominal muscle shear modulus in pediatric population with scoliosis: A reliability and agreement study. *Ultrasound Med Biol*. 2019;45(7):1551-1561. doi: 10.1016/j.ultrasmedbio.2019.03.001.
18. Siracusa J, Charlot K, Malgoyre A, et al. Resting muscle shear modulus measured with ultrasound shear-wave elastography as an alternative tool to assess muscle fatigue in humans. *Front Physiol*. 2019;10. doi: 10.3389/fphys.2019.00626.
19. Song Y, Zhang T, Li Y, et al. Application of real-time shear wave elastography in the assessment of torsional cervical dystonia. *Quant Imaging Med and Surg*. 2019;9(4):662. doi: 10.21037/qims.2019.04.08.

20. Gatz M, Bejder L, Quack V, et al. Shear wave elastography (SWE) for the evaluation of patients with plantar fasciitis. *Acad Radiol.* 2020;27(3):363-370. doi: 10.1016/j.acra.2019.04.009.
21. Alfuraih AM, O'Connor P, Tan AL, et al. Muscle shear wave elastography in idiopathic inflammatory myopathies: A case-control study with MRI correlation. *Skeletal Radiol.* 2019;48(8):1209-1219. doi: 10.1007/s00256-019-03175-3.
22. Bachasson D, Dres M, Nidrat MC, et al. Diaphragm shear modulus reflects transdiaphragmatic pressure during isovolumetric inspiratory efforts and ventilation against inspiratory loading. *J Appl Physiol.* 2019;126(3):699-707. doi: 10.1152/jappphysiol.01060.2018.
23. Alfuraih AM, Tan AL, O'Connor P, et al. The effect of ageing on shear wave elastography muscle stiffness in adults. *Aging Clin and Exp Res.* 2019;31(12):1755-1763. doi: 10.1007/s40520-019-01139-0.
24. Dirrichs T, Schradling S, Gatz M, et al. Shear wave elastography (SWE) of asymptomatic Achilles tendons: A comparison between semiprofessional athletes and the nonathletic general population. *Acad Radiol.* 2019;26(10):1345-1351. doi: 10.1016/j.acra.2018.12.014.
25. Van Eps JL, Chaudhry A, Fernandez-Moure JS, et al. Ultrasound shear wave elastography effectively predicts integrity of ventral hernia repair using acellular dermal matrix augmented with platelet-rich plasma (PRP). *Surgl Endosc.* 2018;33(9): 2802-2811. doi: 10.1007/s00464-018-6571-8.
26. Jiang W, Huang S, Teng H, et al. Diagnostic performance of two-dimensional shear wave elastography for evaluating tibial nerve stiffness in patients with diabetic peripheral neuropathy. *Eur Radiol.* 2019;29(5):2167-2174. doi: 10.1007/s00330-018-5858-4.
27. Andrade RJ, Freitas SR, Hug F, et al. The potential role of sciatic nerve stiffness in the limitation of maximal ankle range of motion. *Sci Rep.* 2018;8(1):14532. doi: 10.1038/s41598-018-32873-6.
28. Cao W, Sun Y, Liu L, et al. A multicenter large-sample shear wave ultrasound elastographic study of the Achilles tendon in Chinese adults. *J Ultrasound Med.* 2018;38(5):1191-1200. doi: 10.1002/jum.14797.
29. Itoigawa Y, Maruyama Y, Kawasaki T, et al. Shear wave elastography can predict passive stiffness of supraspinatus musculotendinous unit during arthroscopic rotator cuff repair for presurgical planning. *Arthroscopy.* 2018;34(8):2276-2284. doi: 10.1016/j.arthro.2018.01.059.
30. Telmo Firmino BM, Oliveira R, Neto T, et al. Hamstring stiffness pattern during contraction in healthy individuals: analysis by ultrasound-based shear wave elastography. *European J Appl Physiol.* 2018;118(11):2403-2415. doi: 10.1007/s00421-018-3967-z.
31. Nakao G, Taniguchi K, Katayose M. Acute effect of active and passive static stretching on elastic modulus of the hamstrings. *Sports Med Int Open.* 2018;2(6):e163-e170. doi: 10.1055/a-0733-6957.
32. Kawai M, Taniguchi K, Suzuki T, Katayose M. Estimation of quadriceps femoris muscle dysfunction in the early period after surgery of the knee joint using shear-wave elastography. *BMJ Open Sport Exerc Med.* 2018;4(1):e000381. doi: 10.1136/bmjsem-2018-000381.
33. Prucha J, Socha V, Sochova V, et al. Effect of high-induction magnetic stimulation on elasticity of the patellar tendon. *J Healthc Eng.* 2018;2018:7172034. doi: 10.1155/2018/7172034.
34. Washburn N, Onishi K, Wang JHC. Ultrasound elastography and ultrasound tissue characterisation for tendon evaluation. *J Orthop Translat.* 2018;15:9-20. doi: 10.1016/j.jot.2018.06.003.
35. Giambini H, Hatta T, Rezaei A, et al. Extensibility of the supraspinatus muscle can be predicted by combining shear wave elastography and magnetic resonance imaging-measured quantitative metrics of stiffness and volumetric fat infiltration: A cadaveric study. *Clin Biomech.* 2018;57:144-149. doi: 10.1016/j.clinbiomech.2018.07.001.
36. Liu J, Qian Z, Wang K, et al. Non-invasive quantitative assessment of muscle force based on ultrasonic shear wave elastography. *Ultrasound Med Biol.* 2019;45(2):440-451. doi: 10.1016/j.ultrasmedbio.2018.07.009.
37. Zhou X, Wang C, Qiu S, et al. Non-invasive assessment of changes in muscle injury by ultrasound shear wave elastography: an experimental study in contusion model. *Ultrasound Med Biol.* 2018;44(12):2759-2767. doi: 10.1016/j.ultrasmedbio.2018.07.016.
38. Bachasson D, Dubois GJR, Allenbach Y, et al. Muscle shear wave elastography in inclusion body myositis: feasibility, reliability and relationships with muscle impairments. *Ultrasound Med Biol.* 2018;44(7):1423-1432. doi: 10.1016/j.ultrasmedbio.2018.03.026.
39. Bedewi MA, Nissman D, Aldossary NM, et al. Shear wave elastography of the brachial plexus roots at the interscalene groove. *Neurol Res.* 2018;40(9):805-810. doi: 10.1080/01616412.2018.1480922.

40. Wang Q, Guo LH, Li XL, et al. Differentiating the acute phase of gout from the intercritical phase with ultrasound and quantitative shear wave elastography. *Eur Radiol.* 2018;28(12):5316-5327. doi: 10.1007/s00330-018-5529-5.
41. Sugahara I, Doi M, Nakayama R, et al. Acute effect of wearing compression stockings on lower leg swelling and muscle stiffness in healthy young women. *Clin Physiol Funct Imaging.* 2018;38(6):1046-1053. doi: 10.1111/cpf.12527.
42. Nishishita S, Hasegawa S, Nakamura M, et al. Effective stretching position for the supraspinatus muscle evaluated by shear wave elastography in vivo. *J Shoulder Elbow Surg.* 2018;27(12):2242-2248. doi: 10.1016/j.jse.2018.06.003.
43. Chino K, Ohya T, Katayama K, et al. Diaphragmatic shear modulus at various submaximal inspiratory mouth pressure levels. *Respir Physiol Neurobiol.* 2018;252:52-57. doi: 10.1016/j.resp.2018.03.009.
44. Miyamoto N, Hirata K, Miyamoto-Mikami E, et al. Associations of passive muscle stiffness, muscle stretch tolerance, and muscle slack angle with range of motion: individual and sex differences. *Sci Rep.* 2018;8(1):8274. doi: 10.1038/s41598-018-26574-3.
45. Fukuyoshi M, Takenaga T, Ono T, et al. Sonographic sequential change of the anteroinferior labrum following arthroscopic Bankart repair: Quantitative and qualitative assessment. *Skeletal Radiol.* 2018;47(11):1511-1515. doi: 10.1007/s00256-018-2964-y.
46. Neto T, Freitas SR, Andrade RJ, et al. Noninvasive measurement of sciatic nerve stiffness in patients with chronic low back related leg pain using shear wave elastography. *J Ultrasound Med.* 2018;38(1):157-164. doi: 10.1002/jum.14679.
47. Pamboris GM, Noorkoiv M, Baltzopoulos V, et al. Effects of an acute bout of dynamic stretching on biomechanical properties of the gastrocnemius muscle determined by shear wave elastography. *PLoS One.* 2018;13(5):e0196724. doi: 10.1371/journal.pone.0196724.
48. Lima K, Rouffaud R, Pereira W, et al. Supersonic shear imaging elastography in skeletal muscles: Relationship between in vivo and synthetic fiber angles and shear modulus. *J Ultrasound Med.* 2018;38(1):81-90. doi: 10.1002/jum.14664.
49. Yoshitake Y, Uchida D, Hirata K, et al. Mechanical interaction between neighboring muscles in human upper limb: Evidence for epimuscular myofascial force transmission in humans. *J Biomech.* 2018;74:150-155. doi: 10.1016/j.jbiomech.2018.04.036.
50. Umehara J, Nakamura M, Nishishita S, et al. Scapular kinematic alterations during arm elevation with decrease in pectoralis minor stiffness after stretching in healthy individuals. *J Shoulder Elbow Surg.* 2018;27(7):1214-1220. doi: 10.1016/j.jse.2018.02.037.
51. Long Z, Tradup DJ, Song P, et al. Clinical acceptance testing and scanner comparison of ultrasound shear wave elastography. *J Appl Clin Med Phys.* 2018;19(3):336-342. doi: 10.1002/acm2.12310.
52. Fontenelle CRC, Mannarino P, Ribeiro FBDO, et al. Semitendinosus and patellar tendons shear modulus evaluation by supersonic shearwave imaging elastography. *Clin Physiol Funct Imaging.* 2018;38(6):959-964. doi: 10.1111/cpf.12506.
53. Yin L, Lu R, Cao W, et al. Three-dimensional shear wave elastography of skeletal muscle: Preliminary study. *J Ultrasound Med.* 2018;37(8):2053-2062. doi: 10.1002/jum.14559.
54. Langlais T, Vergari C, Pietton R, et al. Shear-wave elastography can evaluate annulus fibrosus alteration in adolescent scoliosis. *Eur Radiol.* 2018;28(7):2830-2837. doi: 10.1007/s00330-018-5309-2.
55. Brandenburg JE, Eby SF, Song P, et al. Quantifying effect of onabotulinum toxin A on passive muscle stiffness in children with cerebral palsy using ultrasound shear wave elastography. *Am J Phys Med Rehabil.* 2018;97(7):500-506. doi: 10.1097/PHM.0000000000000907.
56. Koppenhaver S, Kniss J, Lilley D, et al. Reliability of ultrasound shear-wave elastography in assessing low back musculature elasticity in asymptomatic individuals. *J Electromyogr Kinesiol.* 2018;39:49-57. doi: 10.1016/j.jelekin.2018.01.010.
57. Ateş F, Andrade RJ, Freitas SR, et al. Passive stiffness of monoarticular lower leg muscles is influenced by knee joint angle. *European J Appl Physiol.* 2018;118(3):585-593. doi: 10.1007/s00421-018-3798-y.
58. Neto T, Freitas SR, Andrade RJ, et al. Sciatic nerve stiffness is not changed immediately after a slump neurodynamics technique. *Muscle Ligaments Tendons J.* 2018;7(3):583-589. doi: 10.11138/mltj/2017.7.3.583.

59. Li J, Wang YJ, Wang QY, et al. Correlation between pathological characteristics and young's modulus value of spastic gastrocnemius in a spinal cord injury rat model. *Biomed Res Int.* 2017;2017:5387948. doi: 10.1155/2017/5387948.
60. Hardy A, Rodaix C, Vergari C, Vialle R. Normal range of patellar tendon elasticity using the sharewave elastography technique: An *in vivo* study in normal volunteers. *Surg Technol Int.* 2017;31:227-230.
61. Itoigawa Y, Takazawa Y, Maruyama Y, et al. A new technique of surgical planning for anterior cruciate ligament reconstruction: Feasibility assessment of shear wave elastography to tendon of semitendinosus muscle. *Clin Anat.* 2017;31(3):404-408. doi: 10.1002/ca.23000.
62. Kelly JP, Koppenhaver SL, Michener LA, et al. Characterization of tissue stiffness of the infraspinatus, erector spinae, and gastrocnemius muscle using ultrasound shear wave elastography and superficial mechanical deformation. *J Electromyogr Kinesiol.* 2018;38:73-80. doi: 10.1016/j.jelekin.2017.11.001.
63. Alfuraih AM, O'Connor P, Tan AL, et al. An investigation into the variability between different shear wave elastography systems in muscle. *Med Ultrason.* 2017;19(4):392. doi: 10.11152/mu-1113.
64. Coombes BK, Ziegenfuss B, David M, et al. Heterogeneity of passive elastic properties within the quadriceps femoris muscle-tendon unit. *European J Appl Physiol.* 2017;118(1):213-221. doi: 10.1007/s00421-017-3763-1.
65. Dirrachs T, Quack V, Gatz M, et al. Shear wave elastography (SWE) for monitoring of treatment of tendinopathies: A double-blinded, longitudinal clinical study. *Acad Radiol.* 2018;25(3):265-272. doi: 10.1016/j.acra.2017.09.011.
66. Chino K, Takashi H. Association of gastrocnemius muscle stiffness with passive ankle joint stiffness and sex-related difference in the joint stiffness. *J Appl Biomech.* 2018;34(3):169-174. doi: 10.1123/jab.2017-0121.
67. Lv H, Li Z, Hu T, et al. The shear wave elastic modulus and the increased nuclear factor kappa B (NF- κ B/p65) and cyclooxygenase-2 (COX-2) expression in the area of myofascial trigger points activated in a rat model by blunt trauma to the vastus medialis. *J Biomech.* 2018;66:44-50. doi: 10.1016/j.jbiomech.2017.10.028.
68. Miyamoto N, Miyamoto-Mikami E, Hirata K, et al. Association analysis of the ACTN3 R577X polymorphism with passive muscle stiffness and muscle strain injury. *Scand J Med Sci Sports.* 2017;28(3):1209-1214. doi: 10.1111/sms.12994.
69. Coombes BK, Tucker K, Vicenzino B, et al. Achilles and patellar tendinopathy display opposite changes in elastic properties: A shear wave elastography study. *Scand J Med Sci Sports.* 2017;28(3):1201-1208. doi: 10.1111/sms.12986.
70. Nakamura M, Ikezoe T, Nishishita S, et al. Acute effects of static stretching on the shear elastic moduli of the medial and lateral gastrocnemius muscles in young and elderly women. *Musculoskelet Sci Pract.* 2017;32:98-103. doi: 10.1016/j.msksp.2017.09.006.
71. Lima K, Martins N, Pereira W, et al. Triceps surae elasticity modulus measured by shear wave elastography is not correlated to the plantar flexion torque. *Muscles Ligaments Tendons J.* 2017;7(2):347-352. doi: 10.11138/mltj/2017.7.2.347.
72. Masaki M, Aoyama T, Murakami T, et al. Association of low back pain with muscle stiffness and muscle mass of the lumbar back muscles, and sagittal spinal alignment in young and middle-aged medical workers. *Clin Biomech.* 2017;49:128-133. doi: 10.1016/j.clinbiomech.2017.09.008.
73. Domenichini R, Pialat JB, Podda A, Aubry S. Ultrasound elastography in tendon pathology: State of the art. *Skeletal Radiol.* 2017;46(12):1643-1655. doi: 10.1007/s00256-017-2726-2.
74. Hirayama K, Akagi R, Moniwa Y, et al. Transversus abdominis elasticity during various exercises: a shear wave ultrasound elastography study. *Int J Sports Phys Ther.* 2017;12(4):601-606.
75. Hatta T, Giambini H, Itoigawa Y, et al. Quantifying extensibility of rotator cuff muscle with tendon rupture using shear wave elastography: A cadaveric study. *J Biomech.* 2017;61:131-136. doi: 10.1016/j.jbiomech.2017.07.009.
76. Leung WKC, Chu KL, Lai C. Sonographic evaluation of the immediate effects of eccentric heel drop exercise on Achilles tendon and gastrocnemius muscle stiffness using shear wave elastography. *PeerJ.* 2017;5:e3592. doi: 10.7717/peerj.3592.
77. Mannarino P, Lima KMM, Fontenelle CRC, et al. Analysis of the correlation between knee extension torque and patellar tendon elastic property. *Clin Physiol Funct Imag.* 2017;38(3):378-383. doi: 10.1111/cpf.12424.

78. Kusano K, Nishishita S, Nakamura M, et al. Acute effect and time course of extension and internal rotation stretching of the shoulder on infraspinatus muscle hardness. *J Shoulder Elbow Surg.* 2017;26(10):1782-1788. doi: 10.1016/j.jse.2017.04.018.
79. Chino K, Kawakami Y, Takahashi H. Tissue elasticity of in vivo skeletal muscles measured in the transverse and longitudinal planes using shear wave elastography. *Clin Physiol Funct Imag.* 2015;37(4):394-399. doi: 10.1111/cpf.12315.
80. Umehara J, Nakamura M, Fujita K, et al. Shoulder horizontal abduction stretching effectively increases shear elastic modulus of pectoralis minor muscle. *J Shoulder Elbow Surg.* 2017;26(7):1159-1165. doi: 10.1016/j.jse.2016.12.074.
81. Lamouille J, Müller C, Aubry S, et al. Extensor indicis proprius tendon transfer using shear wave elastography. *Hand Surg Rehabil.* 2017;36(3):173-180. doi: 10.1016/j.hansur.2017.02.001.
82. Mathevon L, Michel F, Aubry S, et al. 2D and ShearWave Elastography ultrasound: A reliable method to analyse spastic muscles? *Muscle Nerve.* 2017;57(2):222-228. doi: 10.1002/mus.25716.
83. Creze M, Nyangoh Timoh K, Gagey O, et al. Feasibility assessment of shear wave elastography to lumbar back muscles: A radioanatomic study. *Clin Anat.* 2017;30(6):774-780. doi: 10.1002/ca.22903.
84. Gatz M, Schrading S, Dirrichs T, et al. Topical polidocanol application in combination with static stretching in tendinopathies: a prospective pilot study. *Muscles Ligaments Tendons J.* 2017;7(1):88-97. doi: 10.11138/mltj/2017.7.1.088.
85. Tang Y, Yan F, Yang Y, et al. Value of shear wave elastography in the diagnosis of gouty and non-gouty arthritis. *Ultrasound Med Biol.* 2017;43(5):884-892. doi: 10.1016/j.ultrasmedbio.2016.12.012.
86. Saeki J, Ikezoe T, Nakamura M, et al. The reliability of shear elastic modulus measurement of the ankle plantar flexion muscles is higher at dorsiflexed position of the ankle. *J Foot Ankle Res.* 2017;10(1). doi: 10.1186/s13047-017-0199-0.
87. Lima KMME, Costa Júnior JFS, Pereira WCA, et al. Assessment of the mechanical properties of the muscle-tendon unit by supersonic shear wave imaging elastography: A review. *Ultrasonography.* 2018;37(1):3-15. doi: 10.14366/usg.17017.
88. Aljuraifani R, Stafford RE, Hug F, et al. Female striated urogenital sphincter contraction measured by shear wave elastography during pelvic floor muscle activation: Proof of concept and validation. *Neurourol and Urodyn.* 2017;37(1):206-212. doi: 10.1002/nau.23275.
89. Stafford RE, Aljuraifani R, Hug F, et al. Application of shear-wave elastography to estimate the stiffness of the male striated urethral sphincter during voluntary contractions. *BJU International.* 2016;119(4):619-625. doi: 10.1111/bju.13688.
90. Point M, Guilhem G, Hug F, et al. Cryotherapy induces an increase in muscle stiffness. *Scand J Med Sci Sports.* 2017;28(1):260-266. doi: 10.1111/sms.12872.
91. Le Sant G, Nordez A, Andrade R, et al. Stiffness mapping of lower leg muscles during passive dorsiflexion. *J Anat.* 2017;230(5):639-650. doi: 10.1111/joa.12589.
92. Ryu J, Jeong WK. Current status of musculoskeletal application of shear wave elastography. *Ultrasonography.* 2017;36(3):185-197. doi: 10.14366/usg.16053.
93. Morales-Artacho AJ, Lacourpaille L, Guilhem G. Effects of warm-up on hamstring muscles stiffness: Cycling vs foam rolling. *Scand J Med Sci Sports.* 2017;27(12):1959-1969. doi: 10.1111/sms.12832.
94. Lin CY, Chen PY, Shau YW, et al. Spatial-dependent mechanical properties of the heel pad by shear wave elastography. *J Biomech.* 2017;53:191-195. doi: 10.1016/j.jbiomech.2017.01.004.
95. Dieterich AV, Andrade RJ, Le Sant G, et al. Shear wave elastography reveals different degrees of passive and active stiffness of the neck extensor muscles. *European J Appl Physiol.* 2016;117(1):171-178. doi: 10.1007/s00421-016-3509-5.
96. Ichihashi N, Umegaki H, Ikezoe T, et al. The effects of a 4-week static stretching programme on the individual muscles comprising the hamstrings. *J Sports Sci.* 2016;34(23):2155-2159. doi:10.1080/02640414.2016.1172725.
97. Lin CY, Wu CH, Özçakar L. Restoration of heel pad elasticity in heel pad syndrome evaluated by shear wave elastography. *Am J Phys Med Rehabil.* 2017;96(5):e96. doi: 10.1097/PHM.0000000000000655.
98. Roskopf AB, Bachmann E, Snedeker JG, et al. Comparison of shear wave velocity measurements assessed with two different ultrasound systems in an ex-vivo tendon strain phantom. *Skeletal Radiol.* 2016;45(11):1541-1551. doi: 10.1007/s00256-016-2470-z.

99. Souron R, Bordat F, Farabet A, et al. Sex differences in active tibialis anterior stiffness evaluated using supersonic shear imaging. *J Biomech.* 2016;49(14):3534-3537. doi: 10.1016/j.jbiomech.2016.08.008.
100. Dirrrichs T, Quack V, Gatz M, et al. Shear wave elastography (SWE) for the evaluation of patients with tendinopathies. *Acad Radiol.* 2016;23(10):1204-1213. doi: 10.1016/j.acra.2016.05.012.
101. Petrescu PH, Izvernariu DA, Iancu C, et al. Evaluation of normal and pathological Achilles tendon by real-time shear wave elastography. *Rom J Morphol Embryol.* 2016;57(2):785-790.
102. Dikici AS, Ustabasioglu FE, Delil S, et al. Evaluation of the tibial nerve with shear-wave elastography: A potential sonographic method for the diagnosis of diabetic peripheral neuropathy. *Radiology.* 2017;282(2):494-501. doi: 10.1148/radiol.2016160135.
103. Hatta T, Giambini H, Zhao C, et al. Biomechanical effect of margin convergence techniques: Quantitative assessment of supraspinatus muscle stiffness. *PLoS One.* 2016;11(9):e0162110. doi: 10.1371/journal.pone.0162110
104. Andonian P, Viallon M, Le Goff C, et al. Shear-wave elastography assessments of quadriceps stiffness changes prior to, during and after prolonged exercise: A longitudinal study during an extreme mountain ultra-marathon. *PLoS One.* 2016;11(8):e0161855. doi: 10.1371/journal.pone.0161855.
105. Zhang ZJ, Ng GY, Lee WC, et al. Increase in passive muscle tension of the quadriceps muscle heads in jumping athletes with patellar tendinopathy. *Scand J Med Sci Sports.* 2016;27(10):1099-1104. doi: 10.1111/sms.12749.
106. Nakamura M, Hasegawa S, Umegaki H, et al. The difference in passive tension applied to the muscles composing the hamstrings: Comparison among muscles using ultrasound shear wave elastography. *Man Ther.* 2016;24:1-6. doi: 10.1016/j.math.2016.03.012.
107. Akiyama K, Akagi R, Hirayama K, et al. Shear modulus of the lower leg muscles in patients with medial tibial stress syndrome. *Ultrasound Med Biol.* 2016;42(8):1779-1783. doi: 10.1016/j.ultrasmedbio.2016.03.010.
108. Moreau B, Vergari C, Gad H, et al. Non-invasive assessment of human multifidus muscle stiffness using ultrasound shear wave elastography: A feasibility study. *Proc Inst Mech Eng H.* 2016;230(8):809-814. doi: 10.1177/0954411916656022.
109. Rasool G, Wang AB, Rymer WZ, et al. Altered viscoelastic properties of stroke-affected muscles estimated using ultrasound shear waves—Preliminary data. *2016 38th Annual International Conference of the IEEE Engineering in Medicine and Biology Society.* 2016:2869-2872. doi: 10.1109/EMBC.2016.7591328.
110. Freitas SR, Andrade RJ, Nordez A, et al. Acute muscle and joint mechanical responses following a high-intensity stretching protocol. *European J Appl Physiol.* 2016;116(8):1519-1526. doi: 10.1007/s00421-016-3410-2.
111. Akagi R, Shikiba T, Tanaka J, et al. A six-week resistance training program does not change shear modulus of the triceps brachii. *J Appl Biomech.* 2016;32(4):373-378. doi: 10.1123/jab.2015-0290.
112. Yamauchi T, Hasegawa S, Nakamura M, et al. Effects of two stretching methods on shoulder range of motion and muscle stiffness in baseball players with posterior shoulder tightness: A randomized controlled trial. *J Shoulder Elbow Surg.* 2016;25(9):1395-1403. doi: 10.1016/j.jse.2016.04.025.
113. Brandenburg JE, Eby SF, Song P, et al. Quantifying passive muscle stiffness in children with and without cerebral palsy using ultrasound shear wave elastography. *Dev Med Child Neurol.* 2016;58(12):1288-1294. doi: 10.1111/dmcn.13179.
114. Tran D, Podwojewski F, Beillas P, et al. Abdominal wall muscle elasticity and abdomen local stiffness on healthy volunteers during various physiological activities. *J Mech Behav Biomed Mater.* 2016;60:451-459. doi: 10.1016/j.jmbbm.2016.03.001.
115. Guilhem G, Doguet V, Hauraix H, et al. Muscle force loss and soreness subsequent to maximal eccentric contractions depend on the amount of fascicle strain in vivo. *Acta Physiol.* 2016;217(2):152-163. doi: 10.1111/apha.12654.
116. Du LJ, He W, Cheng LG, et al. Ultrasound shear wave elastography in assessment of muscle stiffness in patients with Parkinson's disease: A primary observation. *Clin Imaging.* 2016;40(6):1075-1080. doi: 10.1016/j.clinimag.2016.05.008.
117. Slane LC, Martin J, DeWall R, et al. Quantitative ultrasound mapping of regional variations in shear wave speeds of the aging Achilles tendon. *Eur Radiol.* 2016;27(2):474-482. doi: 10.1007/s00330-016-4409-0.

118. Leong HT, Hug F, Fu SN. Increased upper trapezius muscle stiffness in overhead athletes with rotator cuff tendinopathy. *PLoS One*. 2016;11(5):e0155187. doi: 10.1371/journal.pone.0155187.
119. Hatta T, Giambini H, Sukegawa K, et al. Quantified mechanical properties of the deltoid muscle using the shear wave elastography: Potential implications for reverse shoulder arthroplasty. *PLoS One*. 2016;11(5):e0155102. doi: 10.1371/journal.pone.0155102.
120. Hirata K, Miyamoto-Mikami E, Kanehisa H, et al. Muscle-specific acute changes in passive stiffness of human triceps surae after stretching. *European J Appl Physiol*. 2016;116(5):911-918. doi: 10.1007/s00421-016-3349-3.
121. Chiu TC, Ngo HC, Lau LW, et al. An investigation of the immediate effect of static stretching on the morphology and stiffness of Achilles tendon in dominant and non-dominant legs. *PLoS One*. 2016;11(4):e0154443. doi: 10.1371/journal.pone.0154443.
122. Zhang LN, Wan WB, Wang YX, et al. Evaluation of elastic stiffness in healing Achilles tendon after surgical repair of a tendon rupture using in vivo ultrasound shear wave elastography. *Med Sci Monit*. 2016;22:1186-1191. doi: 10.12659/MSM.895674.
123. Helfenstein-Didier C, Andrade RJ, Brum J, et al. In vivo quantification of the shear modulus of the human Achilles tendon during passive loading using shear wave dispersion analysis. *Phys Med Biol*. 2016;61(6):2485-2496. doi: 10.1088/0031-9155/61/6/2485.
124. Pournot H, Tindel J, Testa R, et al. The acute effect of local vibration as a recovery modality from exercise-induced increased muscle stiffness. *J Sports Sci Med*. 2016;15(1):142-147.
125. Raiteri BJ, Hug F, Cresswell AG, et al. Quantification of muscle co-contraction using supersonic shear wave imaging. *J Biomech*. 2016;49(3):493-495. doi: 10.1016/j.jbiomech.2015.12.039.
126. Andrade RJ, Nordez A, Hug F, et al. Non-invasive assessment of sciatic nerve stiffness during human ankle motion using ultrasound shear wave elastography. *J Biomech*. 49(3):326-331. doi: 10.1016/j.jbiomech.2015.12.017.
127. Guo L, Zhang C, Zhang DD, et al. Application of shear wave elastography in the evaluation of neck-shoulder myofascial pain syndrome. *Chinese J of Orthop Traum*. 2016;29(2):142-145.
128. Dorado Cortez C, Hermitte L, Ramain A, et al. Ultrasound shear wave velocity in skeletal muscle: A reproducibility study. *Diag Interv Imaging*. 2016;97(1):71-79. doi: 10.1016/j.diii.2015.05.010.
129. Allan Macdonald D, McPhee ME, Tucker K, et al. Reliability of abdominal muscle stiffness measured using elastography during trunk rehabilitation exercises. *Ultrasound Med Biol*. 2016;42(4):1018-1025. doi: 10.1016/j.ultrasmedbio.2015.12.002.
130. Miyamoto N, Hirata K, Kanehisa H. Effects of hamstring stretching on passive muscle stiffness vary between hip flexion and knee extension maneuvers. *Scand J Med Sci Sports*. 2015;27(1):99-106. doi: 10.1111/sms.12620.
131. Chino K, Takahashi H. The association of muscle and tendon elasticity with passive joint stiffness: In vivo measurements using ultrasound shear wave elastography. *Clin Biomech*. 2015;30(10):1230-1235. doi: 10.1016/j.clinbiomech.2015.07.014.
132. Takenaga T, Sugimoto K, Goto H, et al. Posterior shoulder capsules are thicker and stiffer in healthy college baseball players: A quantitative assessment using shear-wave ultrasound elastography. *Am J Sports Med*. 2015;43(12):2935-2942. doi: 10.1177/0363546515608476.
133. Akagi R, Tanaka J, Shikiba T, et al. Muscle hardness of the triceps brachii before and after a resistance exercise session: A shear wave ultrasound elastography study. *Acta Radiol*. 2014;56(12):1487-1493. doi: 10.1177/0284185114559765.
134. Umehara J, Ikezoe T, Nishishita S, et al. Effect of hip and knee position on tensor fasciae latae elongation during stretching: An ultrasonic shear wave elastography study. *Clin Biomech*. 2015;30(10):1056-1059. doi: 10.1016/j.clinbiomech.2015.09.007.
135. Hatta T, Giambini H, Uehara K, et al. Quantitative assessment of rotator cuff muscle elasticity: Reliability and feasibility of shear wave elastography. *J Biomech*. 2015;48(14):3853-3858. doi: 10.1016/j.jbiomech.2015.09.038.
136. Lee SS, Gaebler-Spira D, Zhang LQ, et al. Use of shear wave ultrasound elastography to quantify muscle properties in cerebral palsy. *Clin Biomech*. 2016;31:20-28. doi: 10.1016/j.clinbiomech.2015.10.006.
137. Eriksson Crommert M, Lacourpaille L, Heales LJ, et al. Massage induces an immediate, albeit short-term, reduction in muscle stiffness. *Scand J Med Sci Sports*. 2014;25(5):e490-e496. doi: 10.1111/sms.12341.

138. Martin JA, Biedrzycki AH, Lee KS, et al. In vivo measures of shear wave speed as a predictor of tendon elasticity and strength. *Ultrasound Med Biol.* 2015;41(10):2722-2730. doi: 10.1016/j.ultrasmedbio.2015.06.008.
139. Le Sant G, Ates F, Brasseur JL, et al. Elastography study of hamstring behaviors during passive stretching. *PLoS One.* 2015;10(9):e0139272. doi: 10.1371/journal.pone.0139272.
140. Koo TK, Hug F. Factors that influence muscle shear modulus during passive stretch. *J Biomech.* 2015;48(12):3539-3542. doi: 10.1016/j.jbiomech.2015.05.038.
141. Hirayama K, Akagi R, Takahashi H. Reliability of ultrasound elastography for the quantification of transversus abdominis elasticity. *Acta Radiol Open.* 2015;4(9):205846011560342. doi: 10.1177/2058460115603420.
142. Dubois G, Kheireddine W, Vergari C, et al. Reliable protocol for shear wave elastography of lower limb muscles at rest and during passive stretching. *Ultrasound Med Biol.* 2015;41(9):2284-2291. doi: 10.1016/j.ultrasmedbio.2015.04.020.
143. Ateş F, Hug F, Bouillard K, et al. Muscle shear elastic modulus is linearly related to muscle torque over the entire range of isometric contraction intensity. *J Electromyogr Kinesiol.* 2015;25(4):703-708. doi: 10.1016/j.jelekin.2015.02.005.
144. Umegaki H, Ikezoe T, Nakamura M, et al. Acute effects of static stretching on the hamstrings using shear elastic modulus determined by ultrasound shear wave elastography: Differences in flexibility between hamstring muscle components. *Man Ther.* 2015;20(4):610-613. doi: 10.1016/j.math.2015.02.006.
145. Lin CY, Lin CC, Chou YC, et al. Heel pad stiffness in plantar heel pain by shear wave elastography. *Ultrasound Med Biol.* 2015;41(11):2890-2898. doi: 10.1016/j.ultrasmedbio.2015.07.004.
146. Vergari C, Dubois G, Vialle R, et al. Lumbar annulus fibrosus biomechanical characterization in healthy children by ultrasound shear wave elastography. *Eur Radiol.* 2015;26(4):1213-1217. doi: 10.1007/s00330-015-3911-0.
147. Hug F, Tucker K, Gennisson JL, et al. Elastography for muscle biomechanics: Toward the estimation of individual muscle force. *Exerc Sport Sci Rev.* 2015;43(3):125-133. doi: 10.1249/JES.0000000000000049.
148. Wu CH, Chen WS, Wang TG. Elasticity of the coracohumeral ligament in patients with adhesive capsulitis of the shoulder. *Radiology.* 2016;278(2):458-464. doi: 10.1148/radiol.2015150888.
149. Freitas SR, Andrade RJ, Larcoupaille L, et al. Muscle and joint responses during and after static stretching performed at different intensities. *European J Appl Physiol.* 2015;115(6):1263-1272. doi: 10.1007/s00421-015-3104-1
150. Hirata K, Kanehisa H, Miyamoto-Mikami E, et al. Evidence for intermuscle difference in slack angle in human triceps surae. *J Biomech.* 2015;48(6):1210-1213. doi: 10.1016/j.jbiomech.2015.01.039.
151. Miyamoto N, Hirata K, Kanehisa H, et al. Validity of measurement of shear modulus by ultrasound shear wave elastography in human pennate muscle. *PLoS One.* 2015;10(4):e0124311. doi: 10.1371/journal.pone.0124311.
152. Brandenburg JE, Eby SF, Song P, et al. Feasibility and reliability of quantifying passive muscle stiffness in young children by using shear wave ultrasound elastography. *J Ultrasound Med.* 2015;34(4):663-670. doi: 10.7863/ultra.34.4.663.
153. Aubry S, Nueffer JP, Tanter M, et al. Viscoelasticity in Achilles tendonopathy: Quantitative assessment by using real-time shear-wave elastography. *Radiology.* 2015;274(3):821-829. doi: 10.1148/radiol.14140434.
154. Lee SS, Spear S, Rymer WZ. Quantifying changes in material properties of stroke-impaired muscle. *Clin Biomech.* 2015;30(3):269-275. doi: 10.1016/j.clinbiomech.2015.01.004.
155. Lapole T, Tindel J, Galy R, et al. Contracting biceps brachii elastic properties can be reliably characterized using supersonic shear imaging. *European J Appl Physiol.* 2014;115(3):497-505. doi: 10.1007/s00421-014-3037-0.
156. Andrade RJ, Lacourpaille L, Freitas SR, et al. Effects of hip and head position on ankle range of motion, ankle passive torque, and passive gastrocnemius tension. *Scand J Med Sci Sports.* 2015;26(1):41-47. doi: 10.1111/sms.12406.
157. Lacourpaille L, Hug F, Guével A, et al. Non-invasive assessment of muscle stiffness in patients with Duchenne muscular dystrophy. *Muscle Nerve.* 2014;51(2):284-286. doi: 10.1002/mus.24445.
158. Taniguchi K, Shinohara M, Nozaki S, et al. Acute decrease in the stiffness of resting muscle belly due to static stretching. *Scand J Med Sci Sports.* 2013;25(1):32-40. doi: 10.1111/sms.12146.

159. Eby SF, Cloud BA, Brandenburg JE, et al. Shear wave elastography of passive skeletal muscle stiffness: influences of sex and age throughout adulthood. *Clin Biomech.* 2015;30(1):22-27. doi: 10.1016/j.clinbiomech.2014.11.011.
160. Freitas SR, Andrade RJ, Larcoupaille L, et al. Muscle and joint responses during and after static stretching performed at different intensities. *European J Appl Physiol.* 2015;115(6):1263-1272. doi: 10.1007/s00421-015-3104-1.
161. Vergari C, Rouch P, Dubois G, et al. Non-invasive biomechanical characterization of intervertebral discs by shear wave ultrasound elastography: a feasibility study. *Eur Radiol.* 2014;24(12):3210-3216. doi: 10.1007/s00330-014-3382-8.
162. Akagi R, Takahashi H. Effect of a 5-week static stretching program on hardness of the gastrocnemius muscle. *Scand J Med Sci Sports.* 2013;24(6):950-957. doi: 10.1111/sms.12111.
163. Hug F, Ouellette A, Vicenzino B, et al. Deloading tape reduces muscle stress at rest and during contraction. *Med Sci Sports Exerc.* 2014;46(12):2317-2325. doi: 10.1249/MSS.0000000000000363.
164. Hug F, Hodges PW, van den Hoorn W, et al. Between-muscle differences in the adaptation to experimental pain. *J Appl Physiol.* 2014;117(10):1132-1140. doi: 10.1152/jappphysiol.00561.2014.
165. Brandenburg JE, Eby SF, Song P, et al. Ultrasound elastography: The new frontier in direct measurement of muscle stiffness. *Arch Phys Med Rehabil.* 2014;95(11):2207-2219. doi: 10.1016/j.apmr.2014.07.007.
166. Zhang ZJ, Ng GY, Lee WC, et al. Changes in morphological and elastic properties of patellar tendon in athletes with unilateral patellar tendinopathy and their relationships with pain and functional disability. *PLoS One.* 2014;9(10):e108337. doi: 10.1371/journal.pone.0108337.
167. Lacourpaille L, Hug F, Guével A, et al. New insights on contraction efficiency in patients with Duchenne muscular dystrophy. *J Appl Physiol.* 2014;117(6):658-662. doi: 10.1152/jappphysiol.00544.2014.
168. Nakamura M, Ikezoe T, Kobayashi T, et al. Acute effects of static stretching on muscle hardness of the medial gastrocnemius muscle belly in humans: An ultrasonic shear-wave elastography study. *Ultrasound Med Biol.* 2014;40(9):1991-1997. doi: 10.1016/j.ultrasmedbio.2014.03.024.
169. DeWall RJ, Slane LC, Lee KS, et al. Spatial variations in Achilles tendon shear wave speed. *J Biomech.* 2014;47(11):2685-2692. doi: 10.1016/j.jbiomech.2014.05.008.
170. Sasaki K, Toyama S, Ishii N. Length-force characteristics of in vivo human muscle reflected by supersonic shear imaging. *J Appl Physiol.* 2014;117(2):153-162. doi: 10.1152/jappphysiol.01058.2013.
171. Yoshitake Y, Takai Y, Kanehisa H, et al. Muscle shear modulus measured with ultrasound shear-wave elastography across a wide range of contraction intensity. *Muscle Nerve.* 2014;50(1):103-113. doi: 10.1002/mus.24104.
172. Vergari C, Rouch P, Dubois G, et al. Intervertebral disc characterization by shear wave elastography: An in vitro preliminary study. *Proc Inst Mech Eng H.* 2014;228(6):607-615. doi: 10.1177/0954411914540279.
173. Hug F, Hodges PW, Tucker K. Task dependency of motor adaptations to an acute noxious stimulation. *J Neurophysiol.* 2014;111(11):2298-2306. doi: 10.1152/jn.00911.2013.
174. Lacourpaille L, Nordez A, Hug F, et al. Time-course effect of exercise-induced muscle damage on localized muscle mechanical properties assessed using elastography. *Acta Physiol.* 2014;211(1):135-146. doi: 10.1111/apha.12272.
175. Tucker K, Hodges PW, Van den Hoorn W, et al. Does stress within a muscle change in response to an acute noxious stimulus? *PLoS One.* 2014;9(3):e91899. doi: 10.1371/journal.pone.0091899.
176. Bouillard K, Jubeau M, Nordez A, et al. Effect of vastus lateralis fatigue on load sharing between quadriceps femoris muscles during isometric knee extensions. *J Neurophysiol.* 2014;111(4):768-776. doi: 10.1152/jn.00595.2013.
177. Dewall RJ, Jiang J, Wilson JJ, et al. Visualizing tendon elasticity in an ex vivo partial tear model. *Ultrasound Med Biol.* 2014;40(1):158-167. doi: 10.1016/j.ultrasmedbio.2013.08.022.
178. Koo TK, Guo JY, Cohen JH, et al. Quantifying the passive stretching response of human tibialis anterior muscle using shear wave elastography. *Clin Biomech.* 2014;29(1):33-39. doi: 10.1016/j.clinbiomech.2013.11.009.
179. Ooi CC, Malliaras P, Schneider ME, et al. "Soft, hard, or just right?" Applications and limitations of axial-strain sonoelastography and shear-wave elastography in the assessment of tendon injuries. *Skeletal Radiol.* 2013;43(1):1-12. doi: 10.1007/s00256-013-1695-3.

180. Brum J, Bernal M, Gennisson JL, et al. In vivo evaluation of the elastic anisotropy of the human Achilles tendon using shear wave dispersion analysis. *Phys Med Biol*. 2014;59(3):505-523. doi: 10.1088/0031-9155/59/3/505.
181. Maher RM, Hayes DM, Shinohara M. Quantification of dry-needling and posture effects on myofascial trigger points using ultrasound shear-wave elastography. *Arch Phys Med Rehabil*. 2013;94(11):2146-2150. doi: 10.1016/j.apmr.2013.04.021.
182. Hug F, Lacourpaille L, Maïsetti O, et al. Slack length of gastrocnemius medialis and Achilles tendon occurs at different ankle angles. *J Biomech*. 2013;46(14):2534-2538. doi: 10.1016/j.jbiomech.2013.07.015.
183. Munirama S, Joy J, Eisma R, et al. Images in anesthesiology: shear wave elastography: novel technology for ultrasound-guided regional anesthesia. *Anesthesiology*. 2013;119(3):698.
184. Koo TK, Guo JY, Cohen JH, et al. Relationship between shear elastic modulus and passive muscle force: an ex-vivo study. *J Biomech*. 2013;46(12):2053-2059. doi: 10.1016/j.jbiomech.2013.05.016.
185. Peltz CD, Haladik JA, Divine G, et al. ShearWave elastography: Repeatability for measurement of tendon stiffness. *Skeletal Radiol*. 2013;42(8):1151-1156. doi: 10.1007/s00256-013-1629-0.
186. Aubry S, Risson JR, Kastler A, et al. Biomechanical properties of the calcaneal tendon in vivo assessed by transient shear wave elastography. *Skeletal Radiol*. 2013;42(8):1143-1150. doi: 10.1007/s00256-013-1649-9.
187. Kantarci F, Ustabasioglu FE, Delil S, et al. Median nerve stiffness measurement by shear wave elastography: a potential sonographic method in the diagnosis of carpal tunnel syndrome. *Eur Radiol*. 2013;24(2):434-440. doi: 10.1007/s00330-013-3023-7.
188. Akagi R, Takahashi H. Acute effect of static stretching on hardness of the gastrocnemius muscle. *Med Sci Sports Exerc*. 2013;45(7):1348-1354. doi: 10.1249/MSS.0b013e3182850e17.
189. Zhang ZJ, Fu SN. Shear elastic modulus on patellar tendon captured from supersonic shear imaging: Correlation with tangent traction modulus computed from material testing system and test-retest reliability. *PLoS One*. 2013;8(6):e68216. doi: 10.1371/journal.pone.0068216.
190. Chernak LA, Dewall RJ, Lee KS, et al. Length and activation dependent variations in muscle shear wave speed. *Physiol Meas*. 2013;34(6):713-721. doi: 10.1088/0967-3334/34/6/713.
191. Botanlioglu H, Kantarci F, Kaynak G, et al. Shear wave elastography properties of vastus lateralis and vastus medialis obliquus muscles in normal subjects and female patients with patellofemoral pain syndrome. *Skeletal Radiol*. 2012;42(5):659-666. doi: 10.1007/s00256-012-1520-4.
192. Chen XM, Cui LG, He P, et al. Shear wave elastographic characterization of normal and torn Achilles tendons: a pilot study. *J Ultrasound Med*. 2013;32(3):449-455. doi:10.7863/jum.2013.32.3.449.
193. Lacourpaille L, Hug F, Nordez A. Influence of passive muscle tension on electromechanical delay in humans. *PLoS One*. 2013;8(1):e53159. doi: 10.1371/journal.pone.0053159.
194. Bouillard K, Hug F, Guével A, et al. Shear elastic modulus can be used to estimate an index of individual muscle force during a submaximal isometric fatiguing contraction. *J Appl Physiol*. 2012;113(9):1353-1361. doi: 10.1152/jappphysiol.00858.2012.
195. Kot BC, Zhang ZJ, Lee AW, et al. Elastic modulus of muscle and tendon with shear wave ultrasound elastography: variations with different technical settings. *PLoS One*. 2012;7(8):e44348. doi: 10.1371/journal.pone.0044348.
196. Bouillard K, Nordez A, Hodges PW, et al. Evidence of changes in load sharing during isometric elbow flexion with ramped torque. *J Biomech*. 2012;45(8):1424-1429. doi: 10.1016/j.jbiomech.2012.02.020.
197. Lv F, Tang J, Luo Y, et al. Muscle crush injury of extremity: quantitative elastography with supersonic shear imaging. *Ultrasound Med Biol*. 2012;38(5):795-802. doi: 10.1016/j.ultrasmedbio.2012.01.010.
198. Maïsetti O, Hug F, Bouillard K, et al. Characterization of passive elastic properties of the human medial gastrocnemius muscle belly using supersonic shear imaging. *J Biomech*. 2012;45(6):978-984. doi: 10.1016/j.jbiomech.2012.01.009.
199. Lacourpaille L, Hug F, Bouillard K, et al. Supersonic shear imaging provides a reliable measurement of resting muscle shear elastic modulus. *Physiol Meas*. 2012;33(3):N19-N28. doi: 10.1088/0967-3334/33/3/N19.
200. Bouillard K, Nordez A, Hug F. Estimation of individual muscle force using elastography. *PLoS One*. 2011;6(12):e29261. doi: 10.1371/journal.pone.0029261.

201. Aubry S, Risson JR, Barbier-Brion B, et al. Élastographie transitoire du tendon calcanéen: Résultats préliminaires et perspectives. *Journal de Radiologie*. 92(5):421-427. doi: 10.1016/j.jradio.2011.02.024.
202. Shinohara M, Sabra K, Gennisson JL, et al. Real-time visualization of muscle stiffness distribution with ultrasound shear wave imaging during muscle contraction. *Muscle Nerve*. 2010;42(3):438-441. doi: 10.1002/mus.21723.
203. Gennisson JL, Deffieux T, Macé E, et al. Viscoelastic and anisotropic mechanical properties of in vivo muscle tissue assessed by supersonic shear imaging. *Ultrasound Med Biol*. 2010;36(5):789-801. doi: 10.1016/j.ultrasmedbio.2010.02.013.
204. Nordez A, Hug F. Muscle shear elastic modulus measured using supersonic shear imaging is highly related to muscle activity level. *J Appl Physiol*. 2010;108(5):1389-1394. doi: 10.1152/jappphysiol.01323.2009.
205. Shiotani H, Mizokuchi T, Yamashita R, et al. Acute effects of long-distance running on mechanical and morphological properties of the human plantar fascia. *Scand J Med Sci Sports*. 2020; 10.1111/sms.13690. doi: 10.1111/sms.13690.

End of document

HOLOGIC.COM

MISC-06825 Rev.001. Hologic Inc. All rights reserved. Hologic, SuperSonic, SuperSonic Aixplorer MACH, ShearWave, TriVu, SonicPad, and UltraFast, are trademarks and/or registered trademarks of Hologic, Inc., and or its subsidiaries in the United States and other countries. SuperSonic MACH 30 was previously known as Aixplorer MACH 30. This information is intended for medical professionals in the U.S. and other markets and it not intended as a product solicitation or promotion where such activities are prohibited. Because Hologic materials are distributed through websites, eBroadcasts and tradeshow, it is not always possible to control where such materials appear. For specific information on what products are available for sale in a particular country, please contact your local Hologic representative or write to womenshealth@Hologic.com. This is a general information tool for medical professionals and is not a complete representation of the product(s)' Instruction for Use (IFU) or Package Insert, and it is the medical professionals' responsibility to read and follow the IFU or Package Insert. The information provided may suggest a particular technique or protocol however it is the sole responsibility of the medical professional to determine which technique or protocol is appropriate. At all times, clinicians remain responsible for utilizing sound patient evaluation and selection practices, and for complying with applicable local, state, and federal rules and regulations regarding accreditation, anesthesia, reimbursement, and all other aspects of in-occe procedures. In no event shall Hologic be liable for damages of any kind resulting from your use of 15/15 the information presented. All other trademarks, registered trademarks, and product names are the property of their respective owners. Views and opinions expressed herein by third parties are theirs alone and do not necessarily reflect those of Hologic. Indications for Use: The SuperSonic Imagine Aixplorer MACH® range ultrasound diagnostic systems and transducers, are intended for general purpose pulse echo ultrasound imaging, soft tissue elasticity imaging and Doppler fluid flow analysis of the human body. The Aixplorer MACH® ultrasound diagnostic systems are indicated for use in the following applications, for imaging and measurement of anatomical structures: Abdominal, Small Organs, Musculoskeletal, Superficial Musculoskeletal, Vascular, Peripheral Vascular, Intraoperative, OB-GYN, Pelvic, Pediatric, Transrectal, Transvaginal, Urology, Neonatal/Adult Cephalic and Non-invasive Cardiac. It is intended for use by licensed personnel qualified to direct the use of the medical ultrasound devices. CE certificate no. 26415, FDA cleared K180572. Contact Hologic at 1.800.442.9892 or visit www.hologic.com.

MKG.EC.336/ June 2020