



# Affirm® Upright Breast Biopsy Guidance System

## A better solution<sup>1</sup> – for you and your patients

The world's first 3D™ breast biopsy guidance system gives you the power to quickly transition from screening to 2D or 3D™ interventional procedures using any Hologic 3D Mammography™ capable system. With the Affirm® 3D™ upright biopsy option, you can clearly localize lesions often visible only with tomosynthesis imaging – to help you confidently biopsy even challenging cases.

# Affirm®

Breast Biopsy Guidance System



### Superior Imaging<sup>2</sup>

Pinpoint subtle lesions and faint calcifications – including those that may only be visible with tomosynthesis with the 3D™ biopsy option.



### Streamlined workflow

Efficient, fast, easy to learn and use. The system provides a simplified user interface to help deliver a fast biopsy with fewer steps and a lower patient dose.<sup>2</sup>



### Versatile Solution

Transition from screening to interventional procedures to biopsy a wide spectrum of patients either seated or decubitus. Quickly and easily switch between standard and lateral needle approaches.



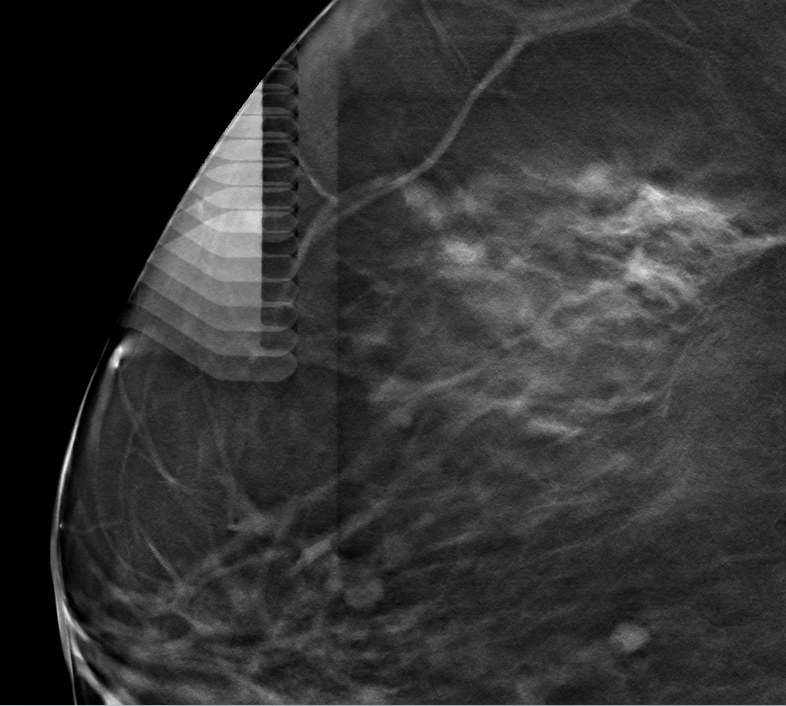
## Simplify the breast biopsy process – even for challenging procedures.

Perform fast, effective biopsies with the Affirm® upright system. It's designed from the ground up to integrate with the Selenia® Dimensions® and 3Dimensions® systems – to streamline workflow and accelerate procedures. The Affirm® upright system leverages the same proven imaging chain as your mammography system to improve 3D™ visualization of suspicious lesions. Plus, the lateral arm accessory enhances your access to a wide range of challenging lesions, so you can address those – quickly, easily, and confidently.



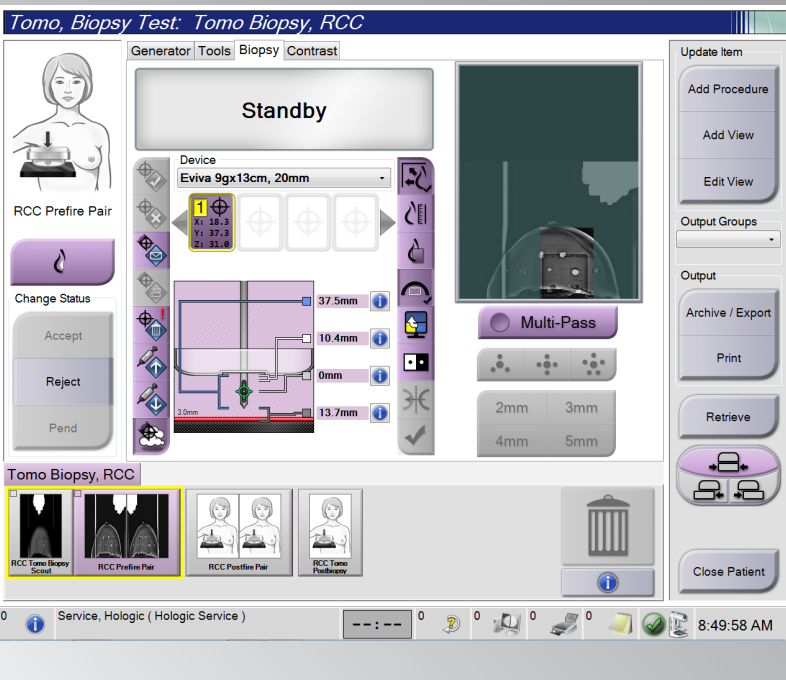
Helps reduce time under compressions, lower x-ray dose, and offer a better patient experience.<sup>2,3</sup>

\* Average procedure time.



## Superior Imaging<sup>2</sup>

- **The proven direct-capture detector** in your Selenia® Dimensions® or 3Dimensions® mammography system ensures that you can biopsy lesions found during screening with certainty.
- **A large field of view** of up to 18 cm x 24 cm for high-resolution stereotactic 2D or 3D™ images makes visualizing suspicious areas simple.
- **Quickly pinpoint subtle lesions and faint calcifications** – including those that may only be visible with tomosynthesis.



## Streamlined Workflow

- **One-click targeting<sup>4</sup>** enables you to quickly localize lesions with confidences.
- **Automated tube-head positioning** for both 2D and 3D™ imaging eliminates the need to manually adjust the x-ray tube location, helping to accelerate procedures.
- **Intuitive design**, simple touch-screen controls, and clear displays of safety margins make it easy for mammography users to quickly learn interventional procedures.
- **Quick set-up and preprogrammed needles** virtually eliminate the need for manual calculations.



## Versatile Solution

- **Quickly transform** your Selenia® Dimensions® or 3Dimensions® system into a powerful biopsy tool with this lightweight portable device.
- **Upgrade to 3D™ biopsy** capability when you are ready with a simple software update.
- **Access challenging lesions** with the optional lateral arm accessory. It installs quickly to present the needle parallel to the detector – especially valuable for thinly compressed breasts.

## One comprehensive solution- yours

Hologic's interventional products are designed to work together as a complete set of breast biopsy solutions to help you improve efficiency, optimize the patient experience, and deliver the best outcomes possible. From image guidance systems, to breast biopsy devices, specimen imaging, site markers and accelerated treatment options, Hologic provides the most comprehensive solutions to treat your patients. Be sure to talk with your Hologic representative about which breast biopsy solutions are right for you and your patients.



The Hologic Affirm portfolio includes both upright and prone breast biopsy guidance systems, so you can provide minimally invasive procedures to the largest group of patients – without compromise. Since these systems complement one another, you can easily meet the needs of your patients regardless of body size or positioning preference. Hologic breast biopsy systems share many of the same advanced technologies, software, features, and operations to deliver superior imaging<sup>2</sup>, streamlined workflow, and maximal access. It's the reason so many doctors choose Hologic systems to help improve patient comfort and satisfaction.

### References

**1.** Compared to previous generation Hologic upright biopsy systems **2.** Schrading S, Martine D, Dirrichs T, et al. "Digital Breast Tomosynthesis-guided Vacuum-assisted Breast Biopsy: Initial Experiences and Comparison with Prone Stereotactic Vacuum-assisted Biopsy." *Radiology*. 2015 274:3, 654-662 E-pub 2014 Nov 12. **3.** Smith A, Sumpkin J, Zuley M, et al. "Comparison of Prone Stereotactic vs. Upright Tomosynthesis Guided Vacuum Assisted Core Breast Biopsies." (paper presented at the annual meeting for the Radiological Society of North America. Chicago, IL, November 2014). **4.** Available with 3D™ breast biopsy option

[www.hologic.com](http://www.hologic.com) | [info@hologic.com](mailto:info@hologic.com) | +1.781.999.7300

**Hologic Headquarters  
United States / Latin America**  
250 Campus Drive  
Marlborough, MA 01752  
USA Tel: +1.508.263.2900  
Sales: +1.781.999.7453  
Fax: +1.781.280.0668  
Email: [info@hologic.com](mailto:info@hologic.com)

**Hologic Europe**  
Everest (Cross Point)  
Leuvensesteenweg  
250A 1800  
Vilvoorde, Belgium  
Tel: +32.2.711.4680  
Fax: +32.2.725.2087

**Hologic Asia Pacific Limited**  
Hologic Asia Pacific Limited  
Unit 01-03A, 13/F, 909 Cheung  
Sha Wan,  
No 909 Cheung Sha Wan Road,  
Cheung Sha Wan, Kowloon,  
HONG KONG  
Tel: +852 3748 7700  
Fax: +852 3526 0723

**Hologic Australia**  
Suite 402, Level 4  
2 Lyon Park Road  
Macquarie Park NSW 2113  
Australia  
Tel: +61.2.9888.8000  
Fax: +61.2.9870.7555

PB-00625 Rev.001 (11/17) ©2017 Hologic Inc. All rights reserved. Hologic, 3D, 3D Mammography, Affirm, Brevera, Dimensions, Eviva, Selenia, The of Sure, and associated logos are trademarks and/or registered trademarks of Hologic, Inc., and/or its subsidiaries in the United States and/or other countries. This information is intended for medical professionals in the U.S. and other markets and is not intended as a product solicitation or promotion where such activities are prohibited. Because Hologic materials are distributed through websites, eBroadcasts and tradeshow, it is not always possible to control where such materials appear. For specific information on what products are available for sale in a particular country, please contact your local Hologic representative.